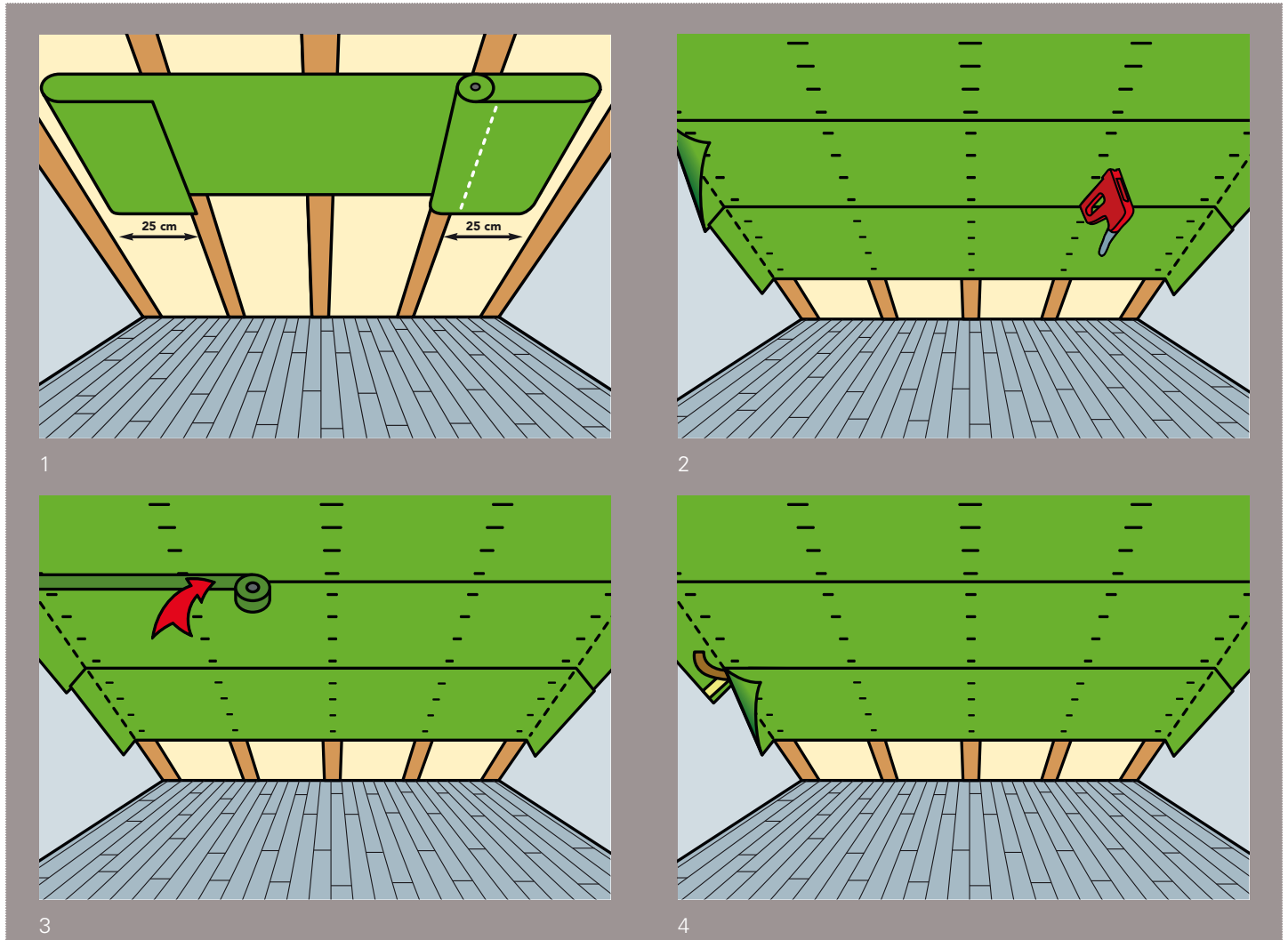


Instructions for use CaVap HP 5



Instructions for use CaVap HP 5

INSTRUCTIONS FOR USE OF CAVAP HP 5 VAPOUR BARRIER FOR INTERIORS



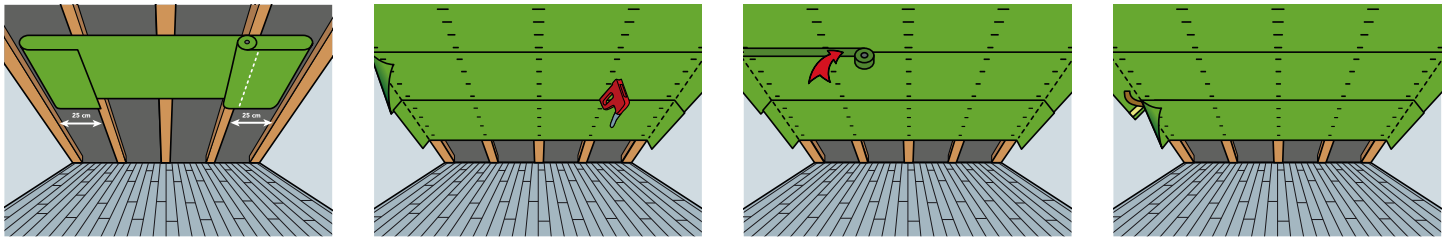
1 Roll out the vapour barrier and cut the excess to size (20-25 cm for each side of the wall to be connected). In the case of a wall connection with a meshed metal baffle, double the excess.

2 The membrane is prefixed on one side with an overhang of approximately 20 cm. It is recommended that the printed side always faces the inside of the building. The recommended installation alignment is parallel to the direction of the rafters/joists. Alternatively, the vapour barrier can also be installed transverse to the direction of the rafters/joists.

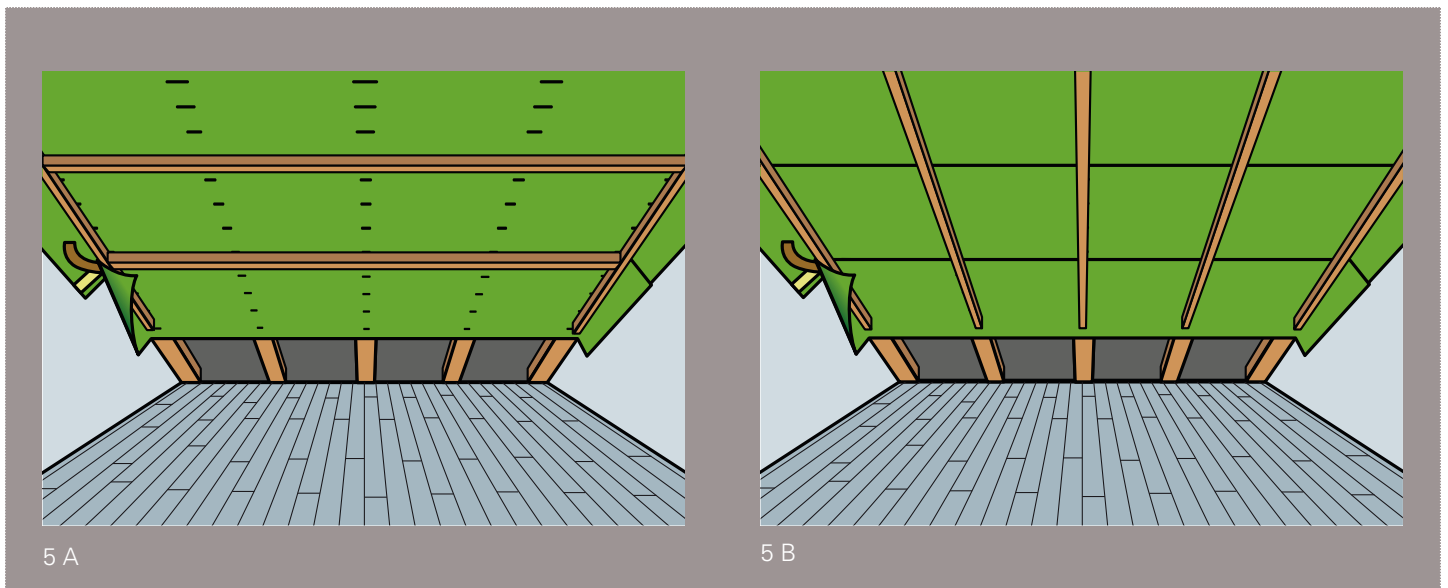
3 Tension and secure the membrane at the connections from rafters (joists) to joists (rafters). When doing so, make sure that the fasteners are not hammered through the membrane. Fasteners that are hammered through must be sealed with CaTape Uni. For the non-adhesive standard variant, the corresponding glued on tape system, CaTape Inside or CaTape Uni, should be used to hermetically seal the overlap. It is important to ensure that the CaTape is applied centrally to the overlap and without tension.

4 Continue to install and secure further layers in a scale-like fashion with at least a 10 cm overlap (if laid at right angles from top to bottom) as previously described. The self-adhesive variant is then bonded to the surface by removing the covering tape and pressing onto the underlying membrane. Rework any defects using CaTape Uni or CaTape Inside. All harm or damage to the vapour barrier should be hermetically sealed with CaTape Uni.

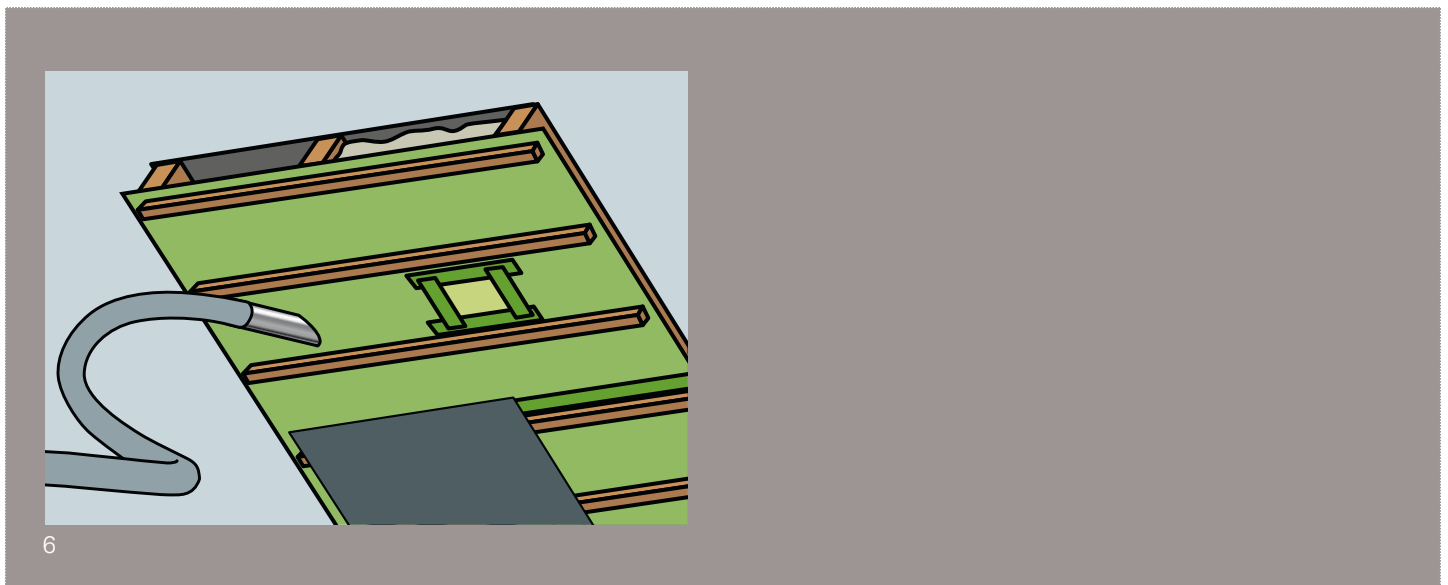
INSTRUCTIONS FOR USE OF CAVAP HP 5 VAPOUR BARRIER FOR BLOWING PROCESSES



For step 1 to 4 of the work, refer to CaVap HP 5 for interiors.



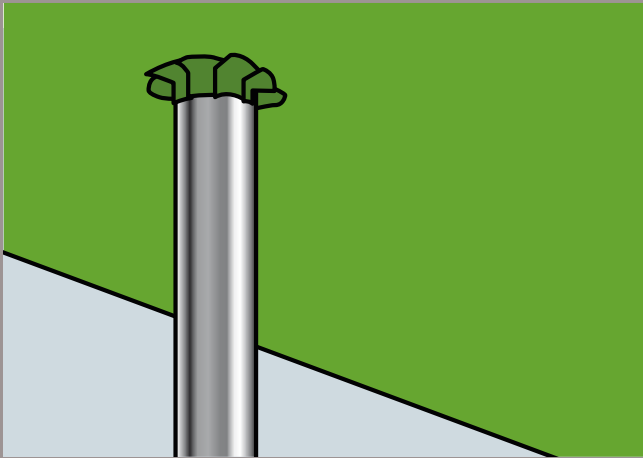
5 Before blowing, the assembly needs to be compensated with battens having a spacing of at least 50 cm (Figure 5 A) or with an underneath shimming of the rafters with a batten for load transfer (Figure 5 B).



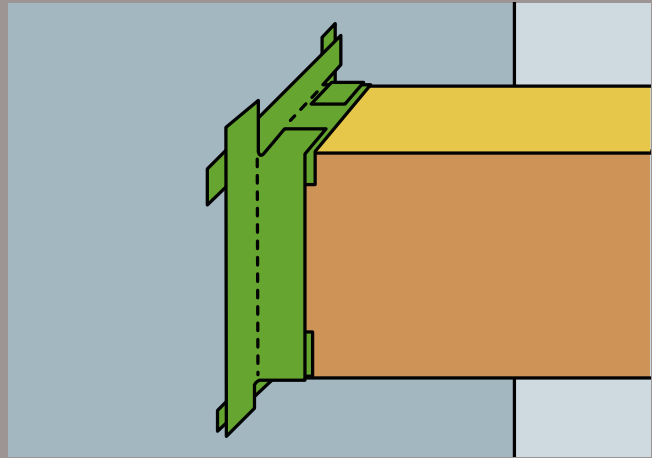
6 When the blowing is performed, the hose is attached as closely as possible to the centre of the rafters. During the blowing operation, make sure that any external underlay membrane does not constrict the external air space by inflating. After blowing, any resulting holes are hermetically sealed with a piece of membrane. Following the blowing out procedures, check the seams once again for air leaks and defects, and rework with CaTape Uni if necessary.

Instructions for use CaVap HP 5

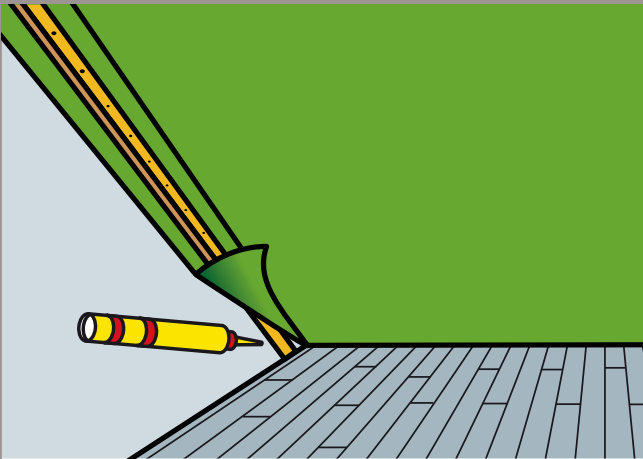
DETAIL CONNECTIONS FOR BOTH APPLICATION METHODS



7



8



9

7 For the passage of pipes, the membrane should be cut in the shape of a cross and the penetrating pipe hermetically incorporated with CaTape Uni in a scale-like manner on the surface and, if necessary, secured with a clamp.

8 To connect to the rafters, the membrane is laid with an amplitude of 3 to 4 cm along the rafters before blowing and hermetically bonded on the surface with CaTape Uni. Alternatively, the rafters can also be bonded with CaClue. In this case, the corner joints should also be secured with CaTape Uni. All connections and penetrations should also be secured with a batten.

9 Wall connection with CaClue. Knock back the side overlap strips, apply the CaClue on the dry, grease-free and dust-free surface (plaster, smooth crude masonry, rough-sawn wood) in an oscillating line with an amplitude of 1.5 to 2 cm. If necessary, the surface should be pre-treated with a primer. Then stick the side overlap strip into the CaClue with a gentle pressure and secure it mechanically to the surface with a pressure bar.

The markings on the membrane are guidance lines and are not an exact measurement.

The working temperature should not fall below + 5 °C. During work and implementation, observe the latest versions of the relevant standards, technical regulations, German Energy conservation regulation (EnEV) requirements and other applicable specifications.

All details are provided to the best of our knowledge and belief. No warranty may be inferred.